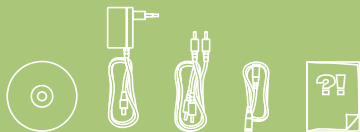


eMana
Network
Audio Player
Users Guide 



Connecting eMana

1. For first time use, connect eMana to the home router and follow the setup configuration for wired or wireless setting.
2. For wired setting, connect ethernet cable one side to the router and the other to the back of eMana. Then connect RCA L/R to the back of both HiFi and eMana. After that, follow the operation procedure for regular use.
3. For wireless setting, light at front of eMana display will light up indicating successful connection between eMana and the router. If lighting does not show, please see troubleshooting for solution. Then connect RCA L/R to the back of both HiFi and eMana. After that, follow the operation procedure for regular use.
4. At the back of eMana there is also an audio out port for which can be used depending on the speaker devices used.



Box contains

- Main body
- Remote control
- Installation CD
- Power adapter
- RCA L/R
- Ethernet cable
- Quickstart IM

Table of Content

[Product Information](#) ▶

[eMana Remote Control](#) ▶

[Software Installation](#) ▶

[Sound Card Configuration](#) ▶

[Network Configuration](#) ▶

[Using eMana](#) ▶

[Re-set instruction](#) ▶

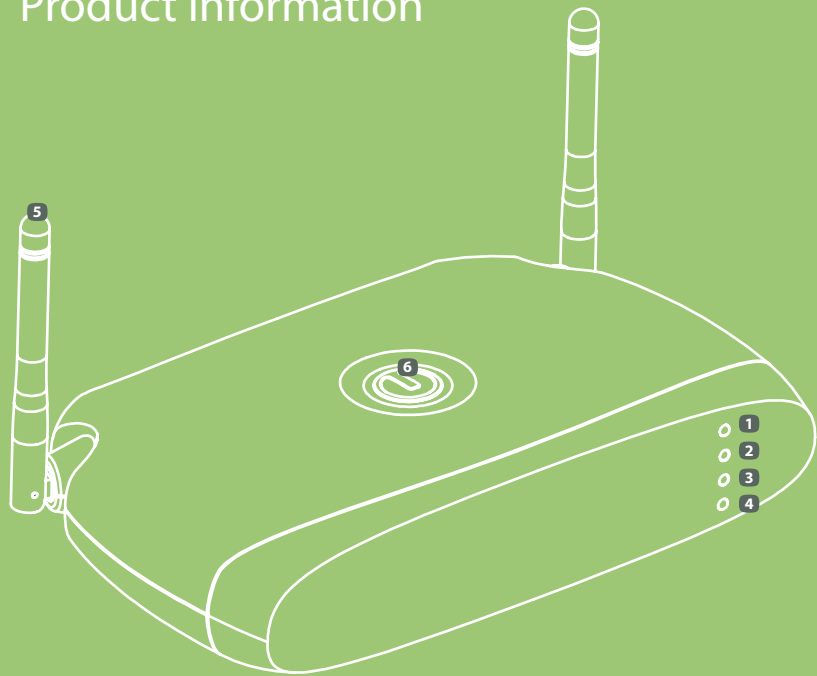
[Internet Radio](#) ▶

[Remote Control Commands](#) ▶

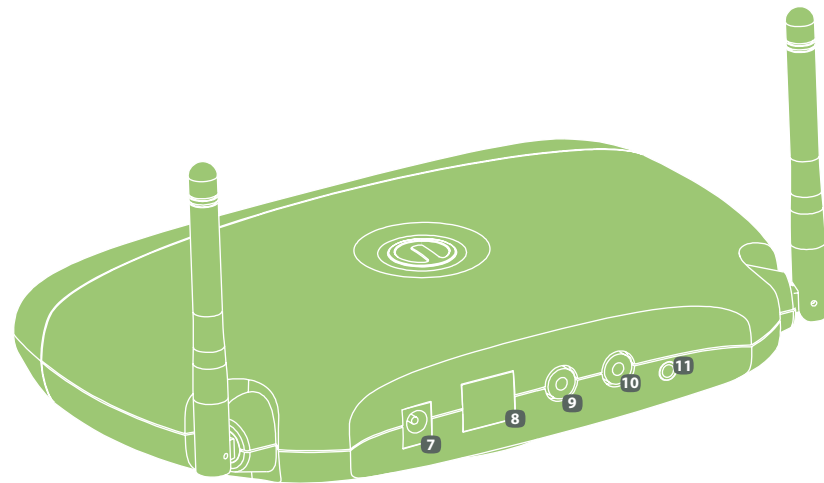
[Technical specification](#) ▶

[Frequently Asked Questions](#) ▶

Product information



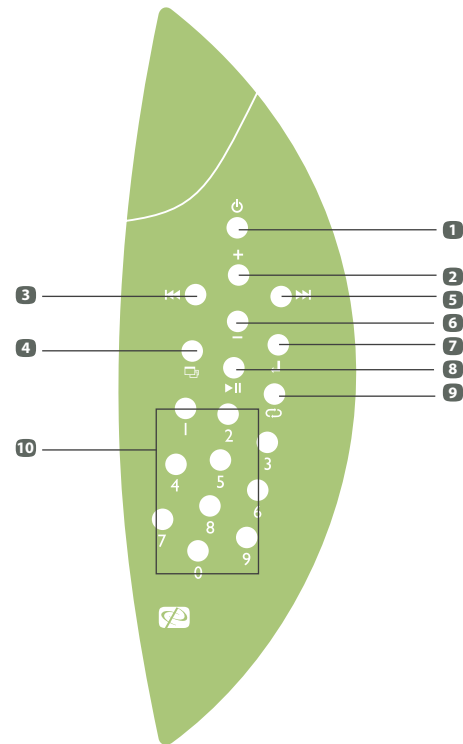
- 1** Power **2** Wireless **3** Shuffle **4** All albums **5** Antenna **6** Re-set



- 7** Power socket **8** RJ-45 LAN cable **9** Phono right **10** Phono left
11 Audio out

eMana remote control

- 1 On/Off
- 2 Next Album
- 3 Previous track
- 4 Mode
- 5 Next Track
- 6 Previous Album
- 7 Enter
- 8 Pause/Play
- 9 Shuffle
- 10 Num Pad



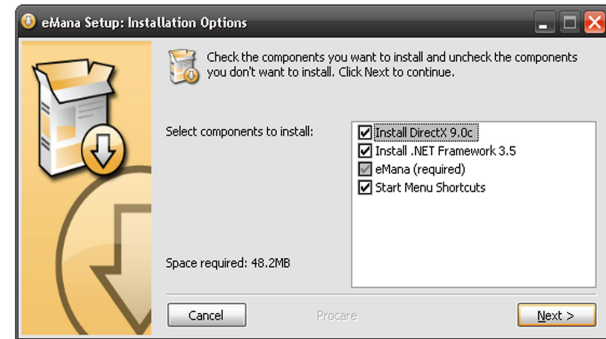
Software Installation

The first-time user needs to install the eMana PC-side software before using eMana to listen to music

From the software CD, find the following software installers and install them on the PC in the following order:

- 1 DotNet Framework 2.0 or higher
(You can download from <http://www.microsoft.com/downloads>)
- 2 DirectX 9.0c
(You can download from <http://www.microsoft.com/downloads>)
- 3 eMana setup

You will see the following screen when you run the eMana software that comes on the installation disc

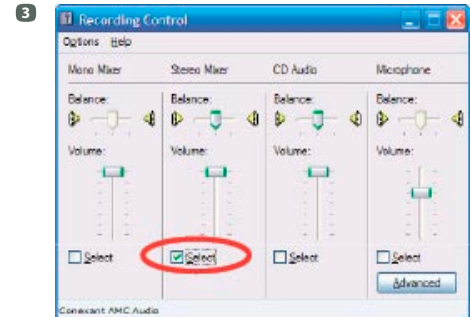
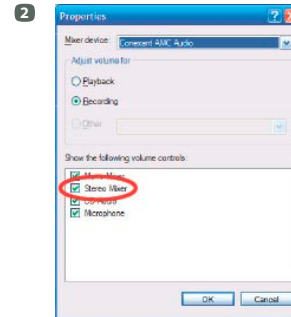
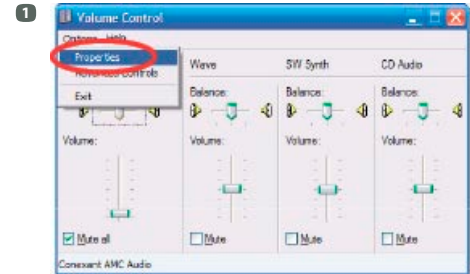


Sound Card Configuration

You will need to configure your sound card into a “loopback” mode. To do this, open Control Panel > Sounds, Speech, and Audio Devices > Sounds and Audio Devices, then click the “Advanced” button in the Device volume zone. You should see the “Volume Control” window.

- 1 In Volume Control window, choose Options > Properties. Click the Recording radio button in “Adjust volume for” zone.
- 2 Make sure your “Stereo Mixer” is checked, then click “OK” to close the box. You should see your recording devices listed in the Recording Control window.
- 3 Make sure Stereo Mixer is checked in its lower checkbox.

If loopback is configured properly, the sound played to your sound card will be sent back to the recording device. Some sound card drivers do not support this loopback mode. In that case, please try contacting your sound card vendor for an updated driver software. If all fails, you can create a “physical loopback” by using a double-ended 3.5mm headphone line to connect the “audio out” jack of your sound card back to the “audio in” jack.



Network Configuration

You can configure eMana's network settings through its web interface. When eMana starts, its display shows the dynamic IP assigned. You can open its web interface by entering the IP into a web browser.

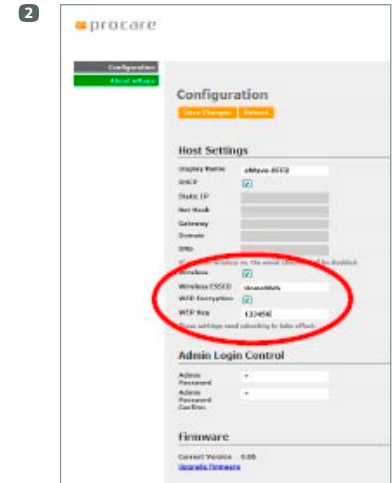
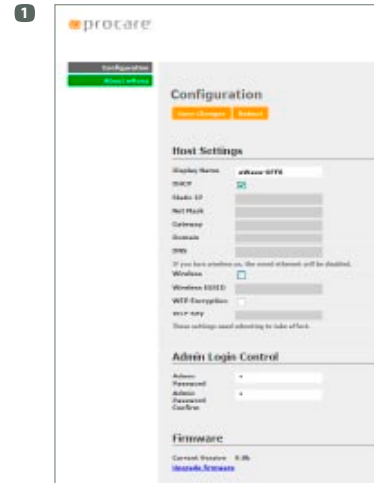
You need to log in with user name "admin" and a blank password.

1 You should see this displayed.

By default configuration your eMana is set to WIRED network mode with DHCP enabled. If you wish to switch your eMana to WIRELESS mode, you need to determine the ESSID (network name) of your home wireless network. If your wireless network is protected by WEP encryption, you need to also determine your WEP password.

2 You can enter both items into the boxes as shown.

If the configuration is unsuccessful and you are unable to receive an IP assigned from your wireless network, you can press the Re-set button on the top of the device for 15 seconds to re-set your network settings to default values (WIRED mode, DHCP enabled). See more on page 12.



Using eMana

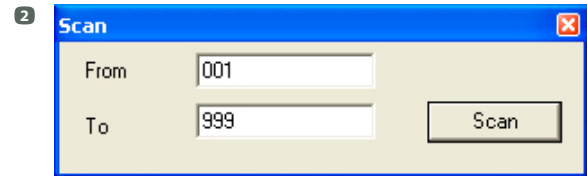
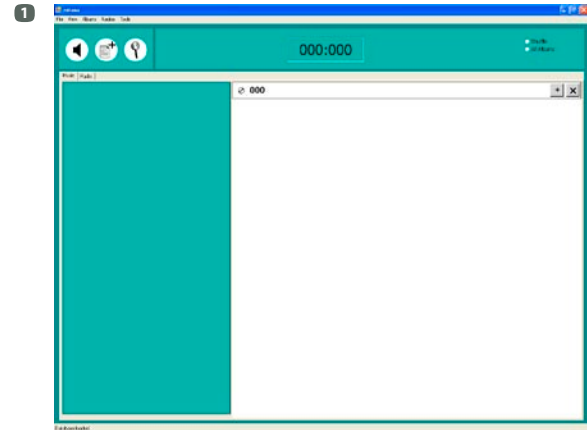
After installation, you can start eMana by running the software from the Windows "Start" menu.

1 You should see this interface the first time you start the program.

To play music, you need to first organize play lists.

2 Select Albums\Scan from menus to bring up the music scan box and automatically scan your hard disk for music files.

By default each folder found to contain playable music files will be assigned a 3-digit album number. Use the Scan box to set the range of album numbers to fill. Any existing album within that number range will be replaced.



3 After scanning, you should see this screen.

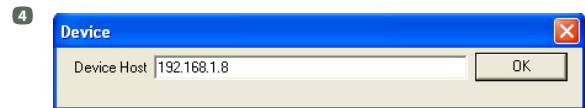
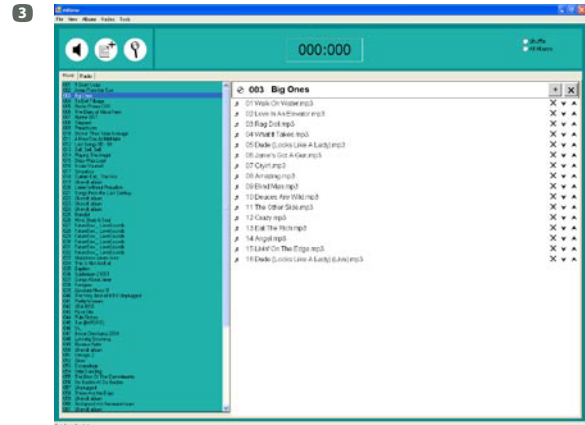
You can click on a folder name on the left panel to see its songs on the right-hand pane.

Now you have numbered albums, it is time to play them on your eMana device. To connect your PC to eMana, connect the wired network port of eMana to your home network (DHCP server for automatic IP assignment is required).

Power up the eMana and you should see a circling animation for about 10 seconds, followed by the IP assigned to the device (e.g., 196.168 with top dot followed up 1.8, shown in alternation).

4 Choose Tools\Connect to Device from PC software and you will see this screen.

Enter the IP address shown on the eMana into the Device box. Click "OK" and you will be connected to the eMana device. eMana will show the album/track number currently played.



5 Initial IP location should show: e.g., 196.168 followed by 1.8, shown in alternation. (6)

7 Once you have typed in the IP address which is shown on the display on the eMana software, the display on eMana will jump to 001:001.

5



6



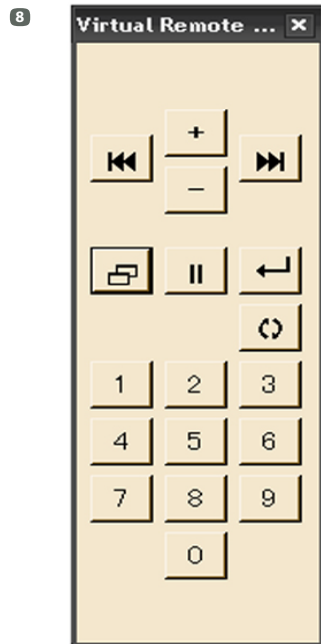
7



To start music playing, you can either use the eMana remote control or use the virtual remote control from the PC software.

- 8 Choose View\Virtual Remote Control from the menu bar to show the virtual remote control.

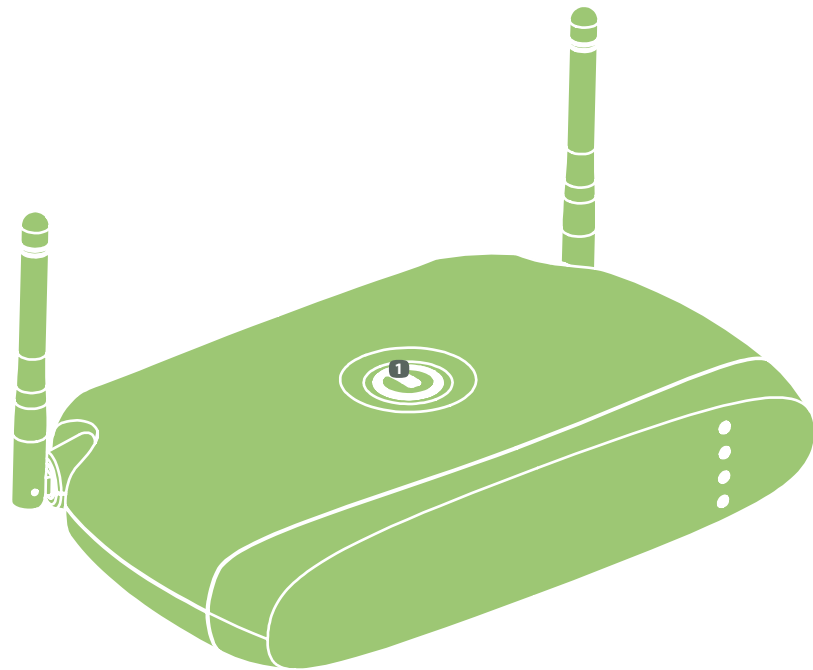
You can click on the Next Album button to switch albums and start music playing.



Re-set instruction

- 1 The re-set button is located on top of the device.

To re-set eMana, unplug the power socket. Then plug in the power socket and press down the button for 10~15 seconds. The device display will show ----- , and is back to the default DHCP settings.



Internet Radio

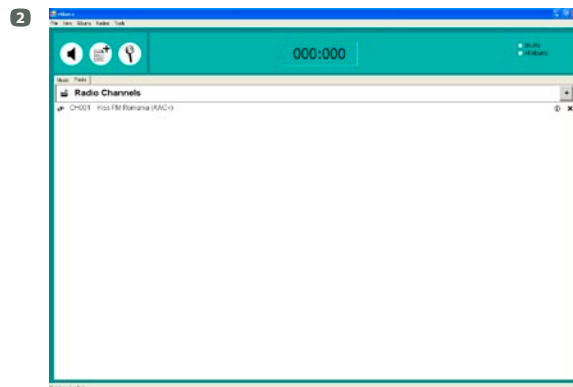
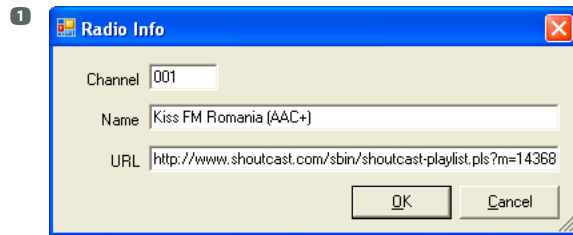
eMana supports SHOUTcast radio streams on the internet in both MP3 and AAC formats.

To find SHOUTcast radio stations, visit <http://www.shoutcast.com>. You can search through thousands of radio stations to find your favorite.








To add a radio station to eMana, click the Radios\Add New Radio item from the menu bar.

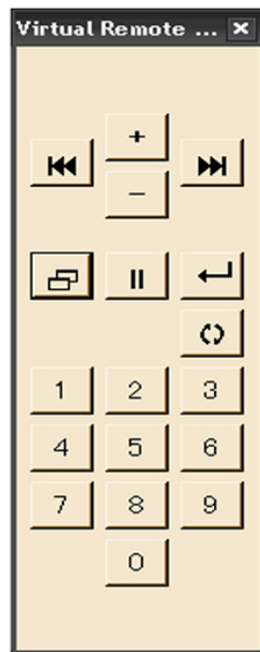
- 1 The URL portion is copied from SHOUTcast through the “Tune In!” buttons on the website.
- 2 After radio stations are added, you can click on the “Radio” tab to see the stations.

To listen to the radio stations, press the “Mode” button on the remote control. You can use the Prev Track/Next Track buttons to switch radio channels.



Remote Control Commands

- 0, 1, ... 9, Enter To select album by their album number
-  Switch between "play all in order," "play all shuffled," "play album in order," and "play album shuffled"
-  Pause music playback
-  Switch between Music mode and Internet Radio mode
-  Go to the previous album or radio station
-  Go to the next album or radio station
-  Go to the previous music track
-  Go to the next music track



Technical Specification

Functions	Plays music stored on a PC Plays Internet radios relayed using a PC
Chipset	ARM9 @ 200 MHz
RAM	16 MB DDR
ROM	4 MB NOR Flash
Wireless Interface	IEEE 802.11b/g wireless network
Network Interface	IEEE 802.3 10/100-baseT Ethernet
Audio Interface	Unamplified analog audio via stereo RCA jacks
Power	12V DC @ 1,500 mA
Buttons	Reset to factory configuration (device-top, hold for 10-15 seconds)
Size	Product:235x124.5x47mm Remote control:163x53x29mm
Weight	Product:322.5g Remote control:56.7g

- Remote Control**
- Power – turn eMana from standby to on mode, ready to accept connection from the PC.
 - Press 0, 1, .. 9, Enter – to select albums by their numbers.
 - Shuffle – switch between “play all in order”, “play all shuffled”, “play album in order”, and “play album shuffled”.
 - Pause – pause music playback
 - Mode – switch between Music and Internet Radio
 - Prev Album – go to the previous album or radio station
 - Next Album – go to the next album or radio station
 - Prev Track – go to the previous music track
 - Next Track – go to the next music track

Network Streaming Uncompressed 24-bit stereo 16-bit digital audio signal@48kHz

Wireless Encryption WEP standard

Default TCP/IP Ports Web-page user interface: 80

eMana PC Software - System Requirements IBM-compatible PC running Windows XP/Vista
Audio hardware supporting hardware play-record loopback

Frequently Asked Questions

1 I see a rotating figure shown on the eMana display. I do not see my IP address?

- You must connect eMana to a home network that supports DHCP (automatic address assignment).

2 I configured by eMana as wireless, but it fails to connect to my home network and I cannot access its configuration page. How do I access it now?

Can I reset it to use wired network with DHCP?

- If you have changed your configuration to wireless and have trouble connecting, please reset the device settings to factory default by holding down the power button (on top of the device) while powering on. Hold the button until you see ---:--- displayed. Now the device has erased all configuration settings and is back to DHCP mode over wired network.

3 I can see my IP displayed on eMana, but when I try to connect via PC software, it says it cannot connect to the device?

- Please make sure your PC and your eMana reside on the same network and can connect. If you use a wireless repeater, sometimes the wired and wireless network segments cannot connect due to NAT (network address translation).

4 I hear the music on both PC and eMana. How do I make it play only on eMana?

- Please mute your PC speakers.

5 Everything seems to connect fine and music is playing (as shown in the title bar of the eMana software), but I cannot hear music from eMana?

- Please make sure your stereo is connected to eMana properly, powered on and selected to take AUX input.
- Some software interferes with eMana by taking over all sound signals from the Windows system. Skype is one example. Please do not use software that interferes with eMana while playing back.
- Please make sure your sound card is configured as stated in "Sound Card Configuration" section to loopback from the "Stereo Mixer."

6 My folder containing .FLAC (or other non-standard extension) files is not included after scanning the hard disk?

- Automatic scanning only includes files with extensions of .WMA, .WAV, and .MP3. Although eMana plays many other formats, the files need to be added manually.
- To add an album manually, select File>Add New Album from eMana. You can then drag and drop your music files into the new album for playback.