

Using Wireless LAN

1 Wireless LAN

Accessory



Wireless USB Adapter(WLU-150A)

Wireless LAN is only available when WLU-150A USB adapter is connected to this Unit.

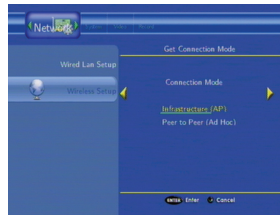
You can set the wireless LAN. Please make sure your wireless router is working properly first and USB wireless adapter is connected to USB port of this unit correctly.

1 Go to Wireless Setup

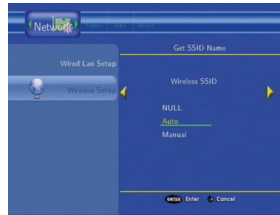


- 2 Select **Modify** and press ► button. You can try to connect the previous connection again by selecting **Connect** if a IP address was found already.

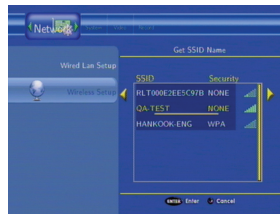
Select **Infrastructure(AP)** and press ► button when using a wireless router. If you're using wireless LAN card in your PC you can use **Peer to Peer(Ad Hoc)**.



- 3 Select **Auto** and press ► button. You can select **Manual** if you know a specified SSID available.

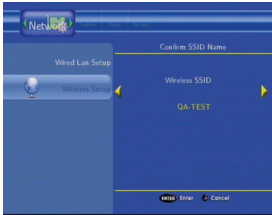


- 4 You can find the available SSID names in the network

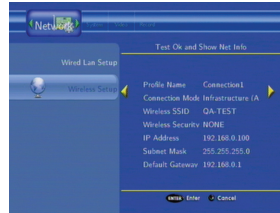


Using Wireless LAN

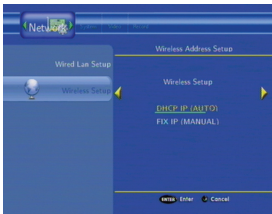
- 5 Confirm the SSID you want to connect by pressing ENTER button.



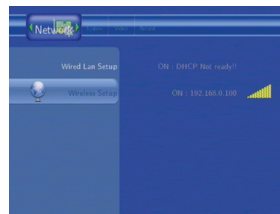
- 8 You can find the IP address, Subnet Mask, Default Gateway if you are connected successfully.



- 6 Select DHCP IP(Auto) or FIX IP(Manual) according to your network setting by pressing ENTER button.



- 9 Press ENTER button to confirm and finish the setting. You can find the IP address on the set up menu,



- 7 Save your selection by pressing Enter button.



You are asked again to Confirm.

NOTE

• Wireless connection is depending on the wireless router capacity and environmental factors in your place. Some of AV files may not be supported with wireless connection especially like high definition Video files.